

### 1. FRUIT ROT

Causal organism: *Phytophthora araca*

A tirah chuan a rah ah pan duk angin alo awm a,alo lian telh telh a a rawng pawh a hring duk deuhin a inthlak thin. He natna vei kuhva rah te chu a puitlin hma in a kuang tello in a tla thin.Hetiang natna vei kuhva chu a hnah chunglam alo ro anga a hnu deuh ah an til mai thin a ni.



#### Management:

1. A kung bul tihfai that tur.
2. Kuhva rah tla ho chu chharkhawma,phum bo emaw hmun hla taka paih tur.
3. Ruahtui tlak hma in a natna laka lo ven lawk nan Bordeaux mixture 1% kah tur ani a,ni 45 hnu ah ruahtui tlak laiin kah nawn leh tur,a tul dan zel azirin ni 45 danah kan kap nawn leh ang.
4. Kuhva rah bawr te chu ruahtui tlak dawn hnaih ah polythene in tuam tur,hei hian tawih natna lakah a veng dawn ani.

### 2. BUD ROT/CROWN ROT

Causal organism: *Phytophthora araca*

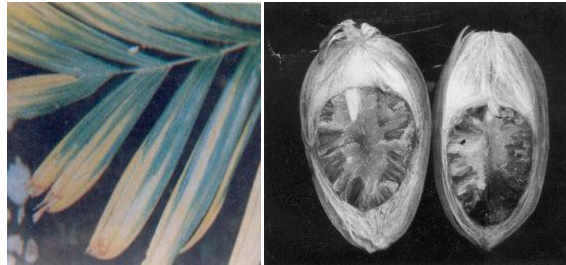


#### Management:

1. Bordeaux mixture 1% in emaw copper oxychloride 2g/litre in fur in tan hmaa kah tur ani a,fur ruahtui tlak zawhah vawi khat kah nawn leh tur.
2. Metalaxyl 35 EC, 2g tui litre khata pawlh in kah tur.

### 3. YELLOW LEAF DISEASE

Causal organism: *Candidatus phytoplasma*



#### Management:

1. A chi natna kai lo chiah lak tur.
2. Natna an kai tawha a rah thar a hlawk loh chuan a kung chu kih a,a thar a thlak tur.
3. NPK 100:40:140g, kung khatah pek tur.
4. Organic manure 12kg kung khatah pek tur.
5. Kuhva kung bul chu tui tling theilo/tui luan na tha tak a awm a ngai a,hei hian natna lakah a veng dawn ani.
6. Hexaconazole/Propiconazole 2g /litre.

### 4. INFLORESCENCE DIE BACK

Causal organism: *Colletotrichum gleosporioides*



(a)

(b)

#### Management:

1. A bawr leh a hnah tla te chu halral zel tur,hei hian kuhva hmuna natna in kai darh tur a veng dawn ani.
2. Mancozeb @3g/litre,ni 25 hnu ah kah leh tur.

### 5. FOOT ROT/BASAL STEM ROT

Causal organism:*Ganoderma lucidum*

A hnah pawn lam a eng hmasa anga zawi zawi in a chhung lamah a kai darh a,a vaiin alo eng a hnah chu a vuai a a tlak phah thin.A kung leiseh chin atanga metre khat velah pan hnai uk a insiam a,hei hian a zung a ti tawiha,kuhva kung a thih phah thei ani.



#### Management:

1. Kuhva kung thi chu kih a halral zel tur.
2. Tui luanna tha a awm tur ani.
3. Neem cake 2kg/palm/year
4. Propiconazole 1ml/litre @15-20 l/palm a khur ah leih tur.

### 6. BACTERIAL LEAF STRIPE

Causal organism: *Xanthomonas campestris*

#### Management:

- 1.Field sanitation.
2. Balhla nena chin pawlh in he natna hi a titlem thin.
3. Inhnaih deuh deuha phun loh tur.
4. Copper hydroxide 2g/l emaw tetracycline 1 g tui litre hnaih ah pawlh in a natna ven lawk nan kah tur.
5. July – October hi a natna tam lai ani a,kuhva kung puitling tawh ai chuan kum 3-5 ho an bei tlangpui.

## DISORDERS

### 1. Nut splitting

Tui luan chhuahna tha lo ah te, A kung upa tawh (kum 10-25) ah leh buh chinna hnu a chin leh hian hetiang natna hi a awm duh. tin, ruahtui rei tak a tlak loh a a rawn sur leh thut hian a awm duh bawk. Kuhva rah chu a puitlin hma in alo enga, a rah chu a keh phel ta thin ani.

#### Management:

1. Tui luanna tha tak siam tur ani.
2. Borax 2g/litre pawlha a nat nasat hma in kah tur.

### 2. Sun scorching

Nisa in a em nasat ltk in a kung thenkhat laia pan/hliam ang deuh a rawn awm a, a pan kha rannung in an bawm a, zawi zawi in a kung alo tawih a, a thih phah thin ani. Kuhva kung la naupang lamah heng natna hi a hluar bik ani.

#### Management

1. A kungah chinai thi hnawih tur.
2. Nisa lutuk hliah turin kuhva leh balhla phun pawlh tur.

### Kuhva eichhetu rannung te:

**1. Root grub (Vual):** Vual in a ei kuva kung chu a hnah a eng a, alo vuai a. Kuhva tiak phun hlim chu awlsam takin a pawh chhuah mai theih thin ani, zan lamah an bei tlangpui.

#### Management

1. May-June leh September-October thla chungin kuhva kung chu lehphut tur ani.
2. Hemi thla chung vek hian Chlorpyrifos 20 Ec 7ml tui litre khat ah pawlha a kung bulah leih kual tur.

### 2. Spindle bug

August-September thla chung hi an inthlahphun hunlai ani. A kung a than theih loh phah.

#### Management:

1. Dimethoate (Rogor 30 Ec) @ 1.5ml/litre water kah tur. An tam dan azirin ni 15-20 hnu ah kah nawn tur.

2. Thiomethoxam 25 WG @ 2g, polythene rim chhuak thei ah fun ila, a kung ah tawn beh tur. Thla 3 danah tih tur.

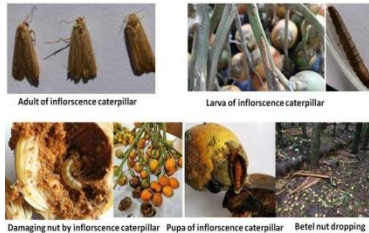
### 3. Pentatomid bug (Thlangdar)

A rah puitlin hma in an zuka, a tlak phah thin. Thlangdar in a zuk chu kuhva rah ah khan hriau a hawlh ang in alo dum ang, a rah pawh a dum uk deuhin a rang thin.

#### Management

1. Neem oil @ 5ml/litre
2. Dimethoate @ 1.5ml/litre

### 4. Inflorescence caterpillar



#### Published by:

*Krishi Vigyan Kendra Kolasib, Kolasib District,  
Department of Agriculture, Govt. of Mizoram*

#### For further details and information, contact:

*Dr. Michelle C. Lallawmkimi  
The Senior Scientist & Head  
Krishi Vigyan Kendra  
[email@kvkkolasib@gmail.com](mailto:email@kvkkolasib@gmail.com)*



## INTEGRATED PEST AND DISEASE MANAGEMENT IN ARECANUT



#### Prepared by:

*Esther Zonunpuii  
Subject Matter Specialist (Plant Protection)  
KVK Kolasib, Kolasib District  
Mizoram*

